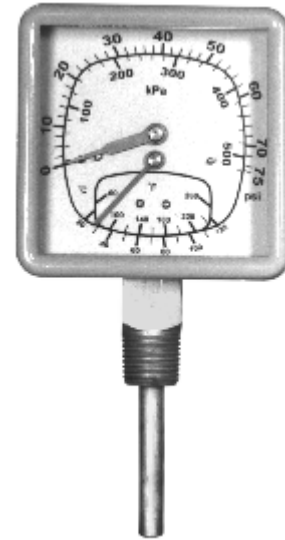


TEMPERATURE INSTRUMENTS



Tridicator/Boiler Gauges (Specifications)
 With 15 models of tridicators in stock, we have more than almost anyone else! All have pressure and temperature scales.

Most round gauges have an adjustable set pointer and acrylic lens. Square gauges have a glass lens.



SERIES TMB BOILER GAUGES									
			Stem Length			Pressure			
Dia	So.	Case	OL	SH	Probe	PSI	Ft. H2O	Temperature	Detail
2"	□"	Round	1.75"	0.8"	0.95"	75	170	70°-320°F	
2"	□"	Round	2.95"	2.0"	0.95"	75	170	70°-320°F	
2"	□"	Round	3.00"	0.8"	2.20"	200	0-460'	70°-250°F	
2"	□"	Round	3.63"	2.0"	1.63"	75	0-170	70°-320°F	
2"	□"	Round	3.63"	2.0"	1.63"	200	0-460'	70°-320°F	
3"	□"	Round	3.00"	1.0"	2.00"	200	0-170	70°-320°F	
3"	□"	Round	3.56"	1.02"	2.54"	75	---	60°-260°F	
3"	□"	Round	3.56"	1.02"	2.54"	200	---	80°-320°F	
3"	□"	Square	3.41"	1.41"	2.00"	75	---	60°-260°F	
3"	□"	Square	3.41"	1.41"	2.00"	200	---	80°-320°F	

*also available with 75 PSI (170' H2O) & 100 PSI (200' H2O)
 OL=Overall Length So=Socket Rd=Round Sq=Square

Thermometers (Specifications)

Models shown are stock items; a full range of thermometers & thermowells is available on special order.

Pocket BI-Metal Thermometers							
Dia	Range F°	Dual Scale F°/C°	Stem	Fitting	Case	Lens	Detail
1.0"	-40°+160°F/0° + 220°F/ +50° + 500°F		5.0"	None	S/S	PL	
1.3"	-40°+160°F/0° + 220°F/ + 50° + 500°F		5.0"	None	S/S	PL	



Hot Water Thermometers

Size	Model	Range	Stem	Case	Lens	Fitting & Stem	Detail
5" Tall	TTD-5	-40° +280°F/+5° +135°C	2"	ST	GL	□" Straight □" Angle	
2 □" Dia	TBD25"	Dual scale Bi-metal +40° +240°F/+5° +135°C	1.6"	AL	PL	□" - R	

*Price includes thermowell **ST=Steel AL=Aluminum



SERIES TTF MERCURY ALL ANGLE THERMOMETERS

Scale Length	Range	Stem	Fitting	Case*	Lens	Detail
9"	0° + 110°F, 0° + 120°F, 0° + 160°F, +20° + 180°F, + 30° + 240°F, + 30° + 300°F + 50° + 400°F	3 □"	□" All Angle	Cyclac	GL	

*Aluminum case for ranges over 400°F available at extra cost.



COMMERCIAL / INDUSTRIAL BI-METAL THERMOMETERS

Dia.	Ranges*	Stem	Fitting	Case	Lens	Detail
3.0"	0° + 250°F & -20° + 120°C/+ 50° + 550°F & +10° + 250°C	2 □"	□" Rear	S/S	GL	
3.0"	0° + 250°F & -20° + 120°C/+ 50° + 550°F & +10° + 250°C/ + 200° + 1000°F & + 100°-500°C	4" 6" 9"	□" Rear	S/S	GL	
3.0"	0° + 250°F & -20° + 120°C/+ 50° + 550°F & +10° + 250°C	12"	□" Rear	S/S	GL	
5.0"	0° + 250°F & -20° + 120°C/+ 50° + 550°F & +10° + 250°C	2 □" 4" 6"	□" All Angle	S/S	GL	

#316 Stainless Available

*Other ranges available from stock at our Eastern Warehouse: -40/160°F 0/150°F +20/240°F +50/300°F; +50/400°F + 150/750°F +25/125°F; 0/200°F 0/300°F +50/550°F +200/1000°F (All dual range °F and °C in 22□, 4", 6", 9" and 12" stems).

*S/S=stainless Steel R=rear L=Lower GL=Glass PL=Plastic



PROPANE (BOBTAIL) BI-METAL THERMOMETERS

Dia.	Range	Stem	Fitting	Case	Lens
2"	-40° + 160°F	4" & 6"	□" - R	S/S	GL
3"	-40° + 160°F	4" & 6"	□" - R	S/S	GL



BAR-B-QUE BI-METAL THERMOMETERS

Dia.	Range	Stem	Fitting	Case	Lens	Detail
3"	0° + 550°F (Smoking 150°-200° Bar-b-que 200°-325° & Searing Zones 325°-550°)	2 □"	□" - R	S/S	GL	



SERIES TBF DUAL MAGNET SURFACE MOUNT BI-METAL THERMOMETERS

Dia.	Range	Detail
2"	100° + 160°F , 0° + 150°F, 0° + 250°F, 0° + 500°F & +50° + 750°F	